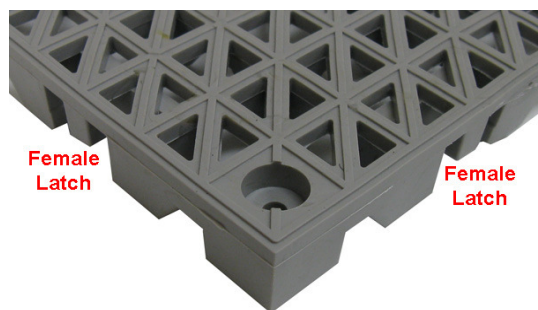


Turtle Tile Matting Installation

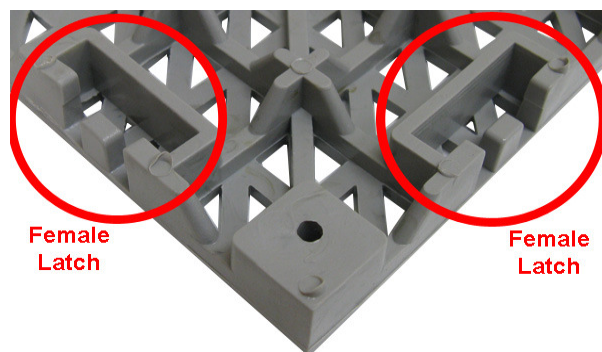


There are two parts to the interlocking system: the Female Latch (fig 1) and the Male Peg (fig 2). See below.

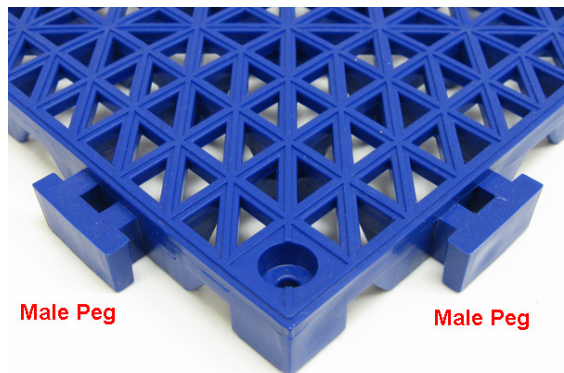
Female Latch (fig 1a) **Top View**



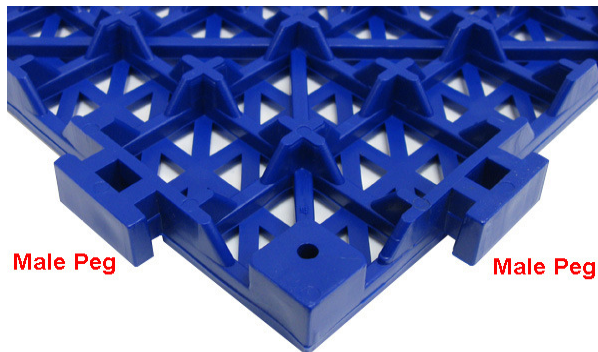
Female Latch (fig 1b) **Bottom View**



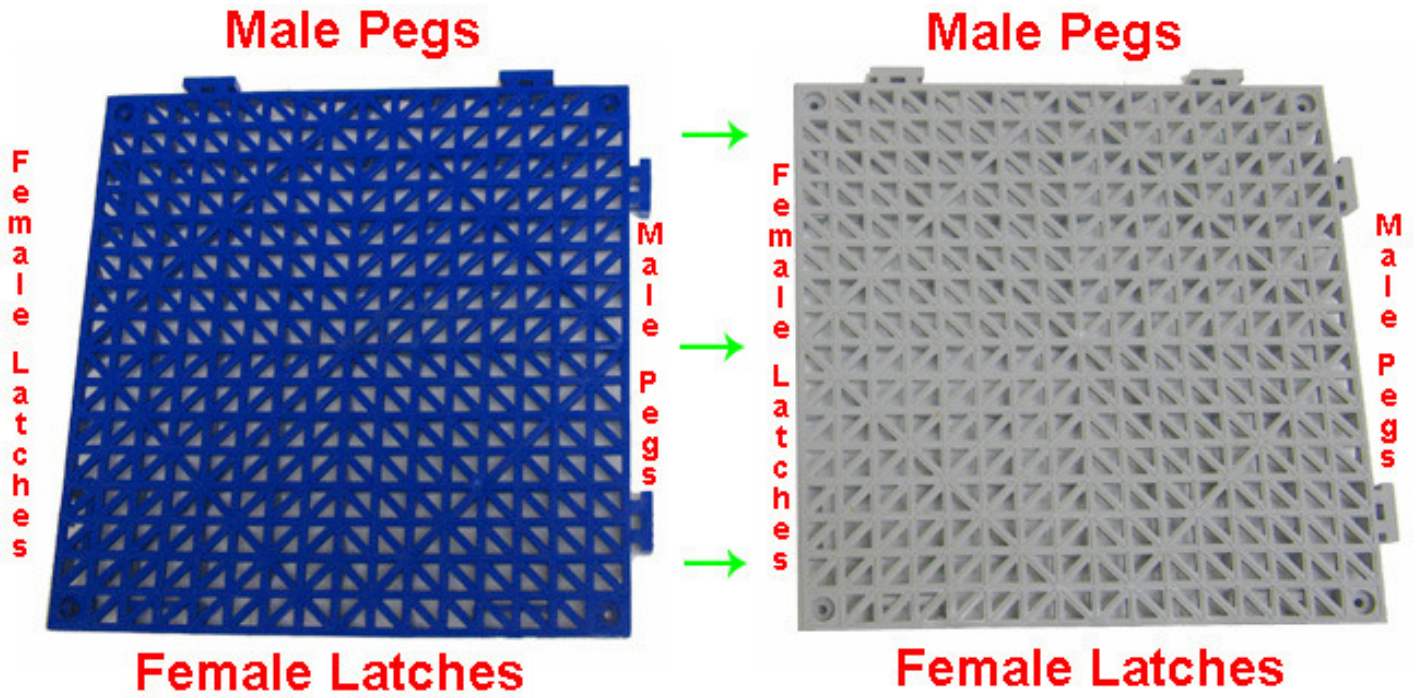
Male Peg (fig 2a) **Top View**



Male Peg (fig 2b) **Bottom View**

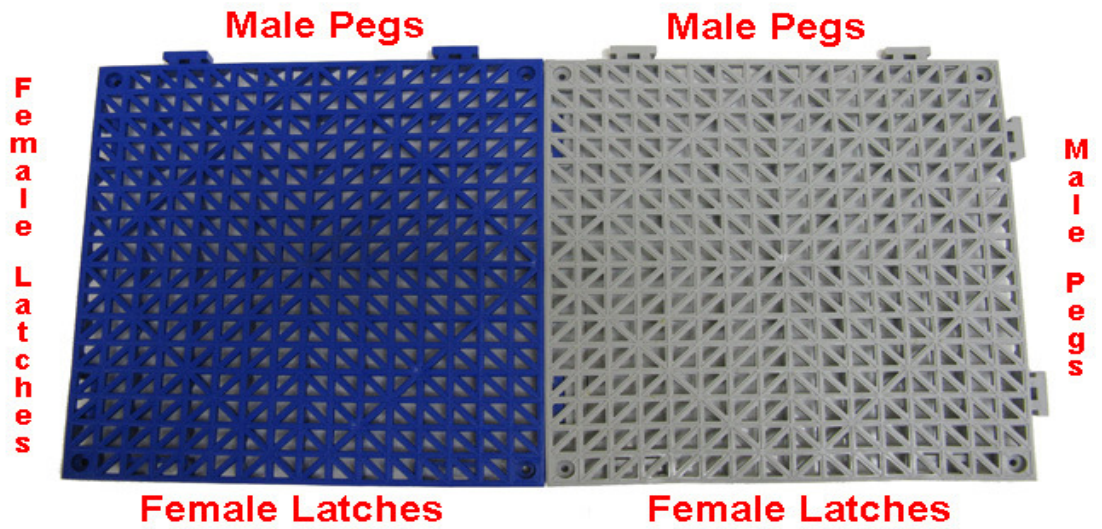


All tiles on any given installation should always have the Male Pegs going in the same direction.

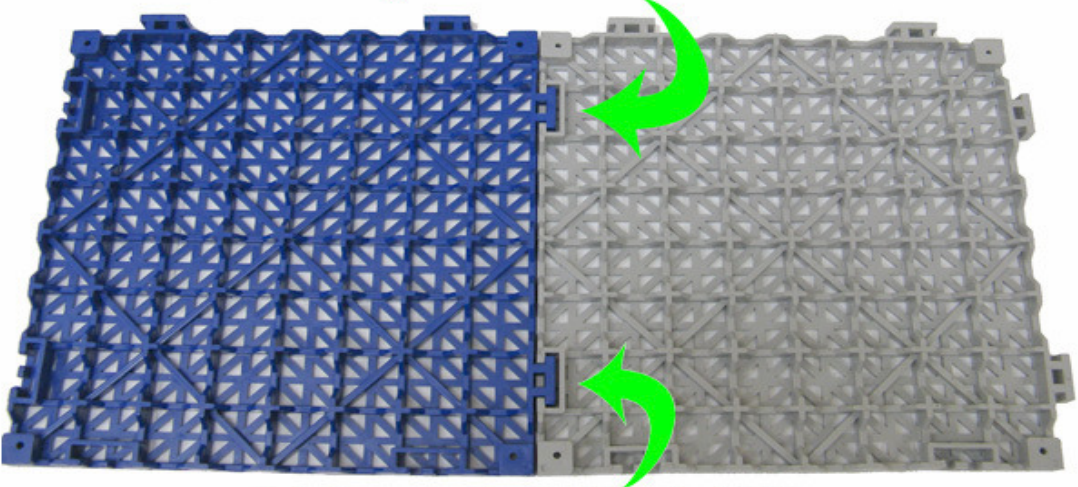


CAUTION: If you inadvertently rotate a tile 90 degrees it will snap into place, but you will not be able to finish the installation properly.

Top View



Male Peg attached to Female Latch



Bottom View

Male Peg attached to Female Latch



152 Rollins Avenue #102
Rockville, MD 20852
800-762-9010
240-780-3309 (f)
<http://www.americanfloormats.com>

ASSEMBLY

Always begin the installation in one corner pointing the Male Pegs in the directions that additional tiles are to be added.

Each tile has two sides that contain Female Connector Latches and two sides that contain Male Connector Pegs. The Male Peg is positioned under the Female Latch and downward pressure is applied from above to snap the Latch into the Peg. It is often helpful to use your foot or a small rubber mallet to snap these pieces together.

Note: It is VERY important that the first section be installed properly because all further sections rely on the positioning of this first section for a smooth installation. Should the rotation of the first line of tiles be backwards or incorrect in any way, sections will need to be continuously lifted up in order to slide Male Pegs under adjacent tiles versus simply snapping Female Latches down from above.

Continue connecting sections, MAKING SURE that subsequent sections are placed correctly such that Male Pegs are facing upwards and into the direction you will be laying the floor. All sections MUST be laid in the same configuration. If a tile is inadvertently placed or section is accidentally rotated 90 degrees it may *appear* to connect correctly, but future sections will not install properly. This mistake can happen most easily on the first line of tiles installed.

Once you have completed the tile floor assembly, transition edge pieces can be installed to provide a smooth and safe transition down to the floor. Utilize the same connection system and method to install edging around the perimeter of the tiled floor.



152 Rollins Avenue #102
Rockville, MD 20852
800-762-9010
240-780-3309 (f)
<http://www.americanfloormats.com>

DISASSEMBLY

In order to most effectively break down the installed tile floor, first remove any edging pieces from the perimeter of the floor and store them together in a dedicated box.

To disconnect the floor tiles, first start at the opposite corner (i.e. top right) from where the installation began. The corner to begin break down is the one that has both Male Connector Pegs facing outside of the floor.

Begin by standing off of the floor and facing inwards (i.e. at the top end of the floor). Grip the floor with both hands. Place your foot on the tile just next to the tile being lifted in order to keep the adjacent tiles from rising. Lift up on the tile, applying upward pressure at the seam between tiles, and detach this section from the adjacent section. Move along this seam such that sections pull upwards until they separate. Once the section is lifted. This method will “unzip” the tiles and protect the integrity of the clip system.

NOTE: DO NOT pull straight up on one or more tiles to disconnect. This can damage the tiles as well as the male/female locking mechanisms.